

## ASN-690 Series

Automatic Serging Machine

ASN-690L  
[Long-table type]

ASN-690S  
[Short-table type]



Long-table type



Short-table type

# ASN-690 Series

Super-high-speed serging machine developed to achieve a simple structure and ease of use

Super-high-speed serging machine developed to achieve a simple structure and

# ASN-690 Series



ASN690LAF8D



## ASN-690 L

[Long-table type]



ASN690SAFA7D

## ASN-690 S

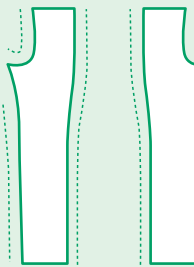
[Short-table type]

The table shape of the short-table type machine permits easy handling of the material to perform serging of a long material even when the work space is small.

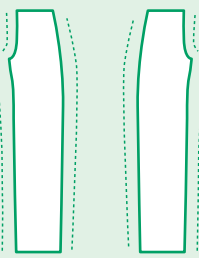
**The machine is applicable to the over casting of material fabrics cut into various jeans, pants and skirt shapes.**

### Example of a serging process

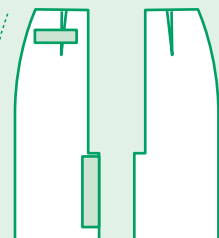
#### Back-body serging



#### Front-body serging (without knee lining/right and left)



#### Ladies' skirts Front- and back-body serging



Increased productivity is required in the serging process. JUKI has launched its super-high-speed machine developed in pursuit of simple-in-operation and ease-of-use. To fully support the operator so that he/she can carry out serging speedily, the machine comes in two different types; the long-table type and the short-table type which permits easy handling of the material.

## Many different technologies which have gone into the simple operation.



### ■The machine is equipped with the super-high-speed overlock machine head MO-6904S.

The machine achieves the high-speed performance of up to 8,000 sti/min to promise increased productivity. The machine performs serging according to the material used, is capable of sewing with reduced thread tension and promises consistent seam quality free from slip-off seams at curved parts of the material.

### ■Flexible cloth guide

The cloth guide can easily be adjusted in height according to the material to be used without using a tool. It eliminates the troublesome changing of spacers.

### ■Looper cleaner

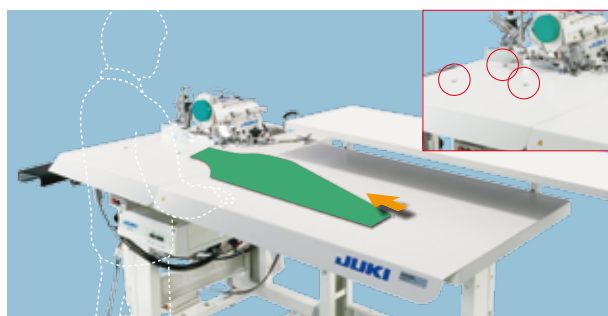
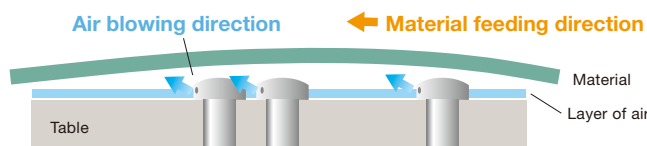
A dust extractor is equipped as standard in the upper looper arm section where dust is likely to gather. It helps prevent dust from accumulating inside the cloth chip cover.

### ■Micro-lifter device

The machine is provided as standard with a micro-lifter device which adjusts the lifting amount of the presser foot to the material thickness to achieve improved seam quality, while preventing puckering and material damage.

### ■Air-blow table

The machine comes with an air-blow table, which issues a jet of air from its air nozzles at three locations to contribute to smoother handling of the material.









### Manual stacker switch



### ■Easy-to-use stacker switch

The stacker automatically actuates according to the preset number of seams. In addition, the stacker can also be actuated by operating the large easy-to-press manual stacker switch.

## Lots of optional device have been prepared to help the operator.

	<b>Silencer</b>	GMC080530A0	It is a device for reducing the noise generated by the dust extractor during sewing.
	<b>Cloth table</b> KM-5	40082456	The table is used for placing sewing materials near the sewing table. (Only for the long-table type)
	<b>Presser foot lifter</b> AK-139	40082451	This is a device for lifting the presser foot automatically.
	<b>3-pedal switch unit</b> PK-79	40082455	The 3-pedal switch unit works as the pause switch, high-/low-speed changeover switch and differential feed switch. The differential feed switch has to be used in combination with the differential feed amount changing device (PF-10).
	<b>Differential feed amount changing device</b> PF-10	40082454	This is a device for changing the differential feed amount. It can widely support the serging of various items.
	<b>Curve sensor</b> CL-5	40082457	This is a sensor for detecting the in-curve shape and changing the speed of the stitch and differential feed amount accordingly.

# WHEN YOU PLACE ORDERS

Please note when placing orders, that the model name should be written as follows:

Sewing table	Code
Long-table type	L
Short-table type	S

Stacker	Code
Not provided	Z
Pneumatic stacker	A

Power supply		Code
Single-phase	200~240V	K
	CE 200~240V	N
3-phase	200~240V	D
	380V	W

**ASN690**

Needle gauge	Code
4.0mm	E
4.8mm	F
5.6mm	G

Option							Code
AK-139	Silencer	CL-5	PF-10	PK-79	KM-5*		
Presser foot lifter		Curve sensor	Differential feed amount changing device	3-pedal switch unit	Cloth table		
—	—	—	—	—	—	ZZ	
—	○	—	—	—	—	A1	
—	○	—	—	—	○	A2	
—	○	○	○	○	○	A3	
○	○	—	—	—	—	A5	
○	○	—	—	—	○	A6	
○	○	○	○	○	—	A7	
○	○	○	○	○	○	A8	

\*The short-table type machine cannot be combined with the KM-5.

●To order, please contact your nearest JUKI distributor.

# SPECIFICATIONS

Model name	ASN-690
Machine head	MO-6904S (Super-high-speed, 1-needle overlock machine)
Application	Serging of skirts, pants, jeans, etc.
Max. sewing speed	8,000sti/min*
Stitch length	0.8~4mm
Overedging width (mm)	4.0, 4.8, 5.6
Differential feed ratio	For gathering 1:2 (max. 1:4), For stretching 1:0.7 (max. 1:0.6)
Needle	DC×27 (#11) #9~#14
Thread trimming device	Exclusive pneumatic side cutter
Lubrication	Automatic
Lubricating oil	JUKI MACHINE OIL 18 (equivalent to ISO VG18)
Compressed air	0.5MPa
Power consumption	590VA
Power requirement	Single-phase 200~240V, 3-phase 200~380V
Machine weight	Long-table type (L): 160kg (with stacker)
	Short-table type (S): 110kg (with stacker)
Dimensions	Long-table type (L) with stacker: 1,800mm (W) × 790mm (D) × 880mm (H) Long-table type (L) without stacker: 1,500mm (W) × 790mm (D) × 880mm (H) (When the Cloth table (KM-5) is used, the width is 2,100mm for the machine with a stacker, or 1,800mm for the one without a stacker.)  Short-table type (S) with stacker: 790mm (W) × 875mm (D) × 880mm (H) Short-table type (S) without stacker: 790mm (W) × 575mm (D) × 880mm (H)

\*"sti/min" stands for "Stitches per Minute."



### JUKI CORPORATION HEAD OFFICE

Juki Corporation operates an environmental management system to promote and conduct the following as the company engages in the research, development, design, sales, distribution, and maintenance of industrial sewing machines, household sewing machines, industrial robots, etc., and in the provision of sales and maintenance services for data entry systems:

- The development of products and engineering processes that are safe to the environment
- Green procurement and green purchasing
- Energy conservation (reduction in carbon-dioxide emissions)
- Resource saving (reduction of papers purchased, etc.)
- Reduction and recycling of waste
- Improvement of logistics efficiency (modal shift and improvement of packaging, packing, etc.)

**JUKI**®  
**JUKI CORPORATION**  
**MARKETING & SALES H.Q.**

8-2-1, KOKURYO-CHO, CHOFU-SHI,  
 TOKYO 182-8655, JAPAN  
 PHONE : (81) 3-3480-2357, 2358  
 FAX : (81) 3-3430-4909  
 http://www.juki.com

\* Specifications and appearance are subject to change without prior notice for improvement.  
 \* Read the instruction manual before putting the machine into service to ensure safety.  
 \* This catalogue prints with environment-friendly soyink on recycle paper.