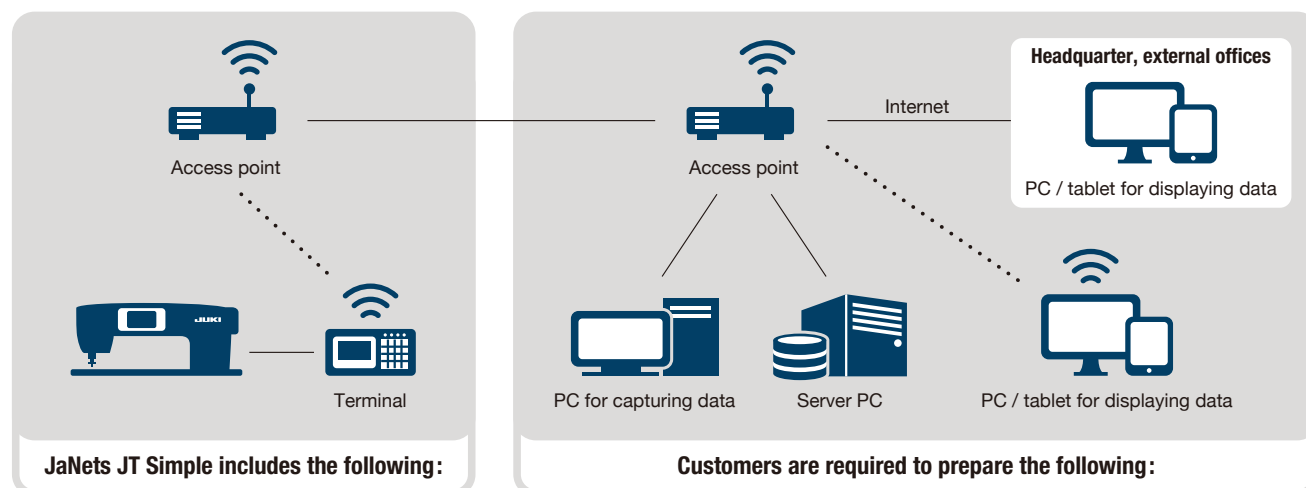
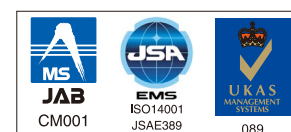
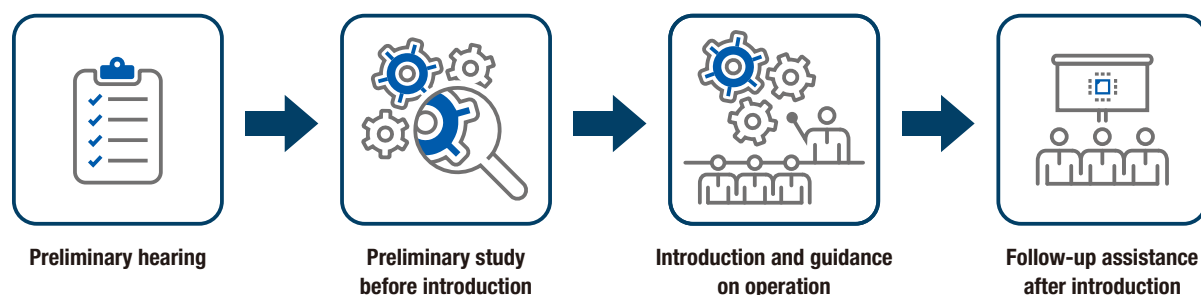


Configuration of JaNets JT Simple



JaNets JT Simple introduction process



Registered Organization : JUKI CORPORATION Head Office
The Scope of the Registration : The activities of research, development, design, sales, distribution, and maintenance services of industrial sewing machines, household sewing machines and industrial robots, etc., including sales and maintenance services of data entry systems.

JUKI

JUKI CORPORATION
SEWING MACHINERY & SYSTEMS BUSINESS UNIT

2-11-1, TSURUMAKI, TAMA-SHI,
TOKYO 206-8551, JAPAN
PHONE : (81) 42-357-2370
FAX : (81) 42-357-2274
<https://www.juki.co.jp/en>

* Specifications and appearance are subject to change without prior notice for improvement.
* Read the instruction manual before putting the machine into service to ensure safety.
* This catalogue prints with environment-friendly soyink on recycle paper.
* Paper from responsible sources FSC™ C001712

JULY, 2019 Printed in Japan(TN)

JaNets JT Simple

▶▶▶▶▶ Visualization of the production line ◀◀◀◀◀

JaNets

Juki advanced Network system

Machine operation management system



JUKI Smart Solutions
Innovation with our Best Global Support

What is *JaNets* JT Simple?

JaNets JT Simple is the machine operation management system that is able to receive the operation data and quantity of output of the sewing machine transferred from the terminal installed on each sewing machine for the purpose of monitoring.



Terminal

1. Operation status of the sewing machine and the line balance are visualized to help find hidden problems in the production line and enable early solution.
2. The JUKI sewing machine automatically counts the number of pieces produced by the number of times of thread trimming. (The automatic counting method can be changed to the push-button activated counting method.)
In the case of other company brand's models, only the push-button activated counting method is available.
3. Not only in production sites but also in other offices including the headquarter, the line condition can be grasped in real time, thereby promoting paperless.
4. Can be connected to almost JUKI sewing machines after 2010.

※Please contact a JUKI sales company for details

Benefits of introducing JaNets JT Simple

Corporate managers

- Grasping the work progress in the line in real time
- Grasping the machine operation status (operation rate, failure rate)

Production managers

- Grasping the line balance based on the processing time to enable improvement of appropriate line balance and to request for assistance
- Being able to make comparison of target / result on a machine-by-machine basis
- Grasping the machine operation status (operation rate, failure rate)

Maintenance managers

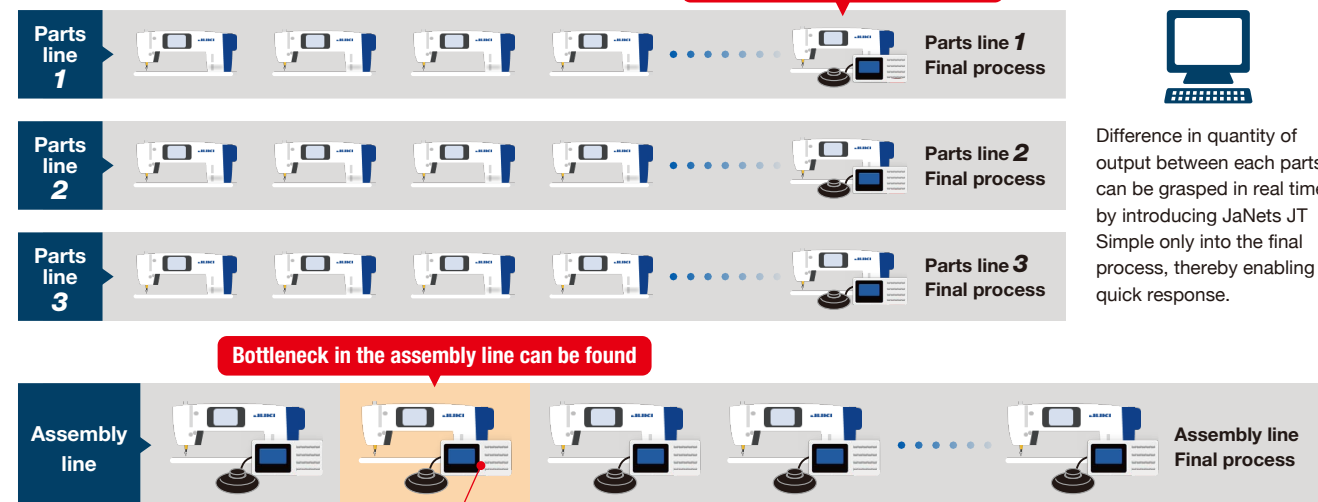
- Early detection of the sewing machine in trouble

Operators

- Grasping the work progress of his/her own in real time

Example of introduction of JaNets JT Simple

Introduction of JaNets JT Simple



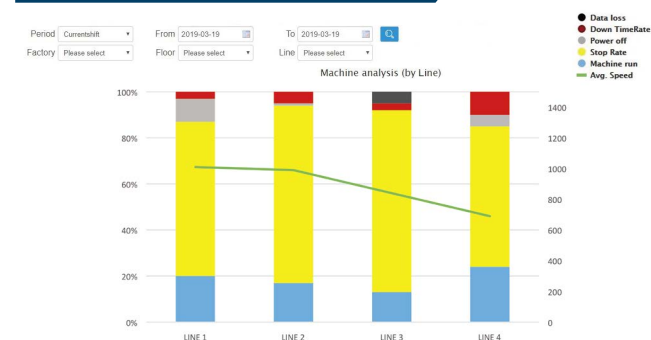
Bottleneck in the assembly line can be found

Bottleneck process can be found according to the quantity of output and processing time on machine-by-machine basis to contribute to improvement of the line balance.

Visualization by JaNets JT Simple

"Visualization of the machine operation status" Operation rate is displayed in real time on an object-by-object basis

Operation rate change by line



Operation rate (operating time, standby time, power OFF time, failure time) at the current time (or within the specified period of time) can be displayed on a line-by-line basis in a chart. In addition, the average speed of the sewing machines installed in the line can be also displayed.

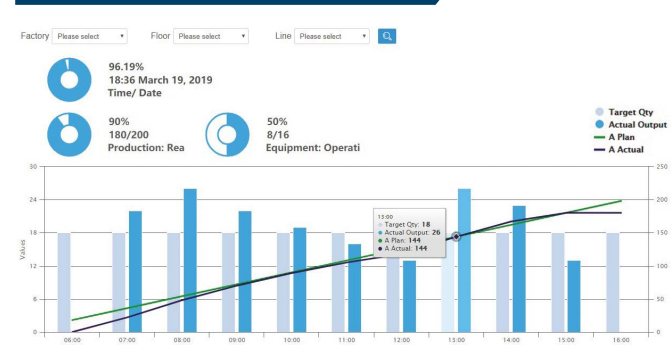
Time-series operation rate chart



The operation rate of the specified line / sewing machine is displayed in time series. The production progress status of the line and the work progress status of the operator, such as the time of day when the operation rate is lowered, can be visualized.

"Visualization of production output" The quantity of output with respect to the target can be displayed

Dashboard



Achievement rate with respect to the target and hour-by-hour progress can be understood at a glance. As a result, a delay and other problems in the production line can be found early to take a corrective action.

Real-time production line monitoring

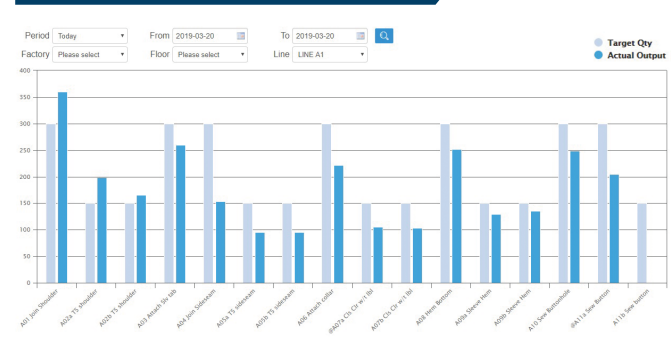


The output quantity list can be displayed on a machine-by-machine basis. The progress and achievement rate can be displayed in an easy-to-understand format by color.

▶ In the case a trouble occurs, an icon calling the operator's attention is displayed.

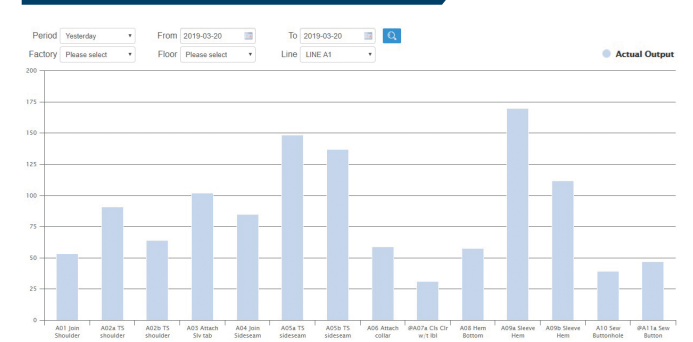
"Visualization of the line balance" Visualization of the bottleneck enables the operator / manager to take action earlier

Time-series output-quantity chart



The quantity of output of the specified line / sewing machine can be displayed in time series. Comparison with the target number of products produced is also possible.

Processing time chart



The statistically-processed processing time of each sewing machine can be displayed in a chart. This function helps grasp the line balance and supports improvement of the line to achieve the optimum process distribution.