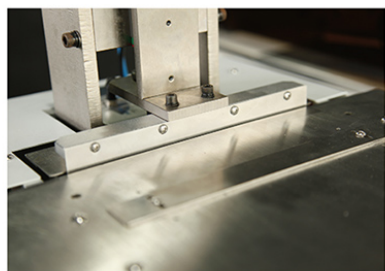
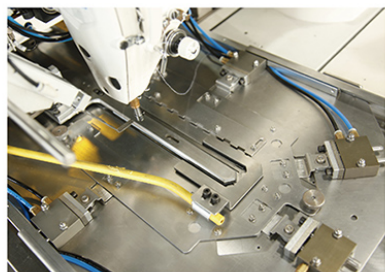


# WS-8600/DDDL-9000B

自动衬衫袖衩缝纫机

AUTOMATIC SLEEVE PLACKET ATTACHING MACHINE

SEWING  
SPEED  
**3000**

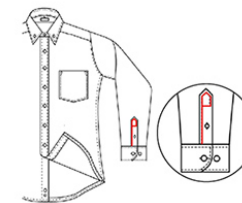
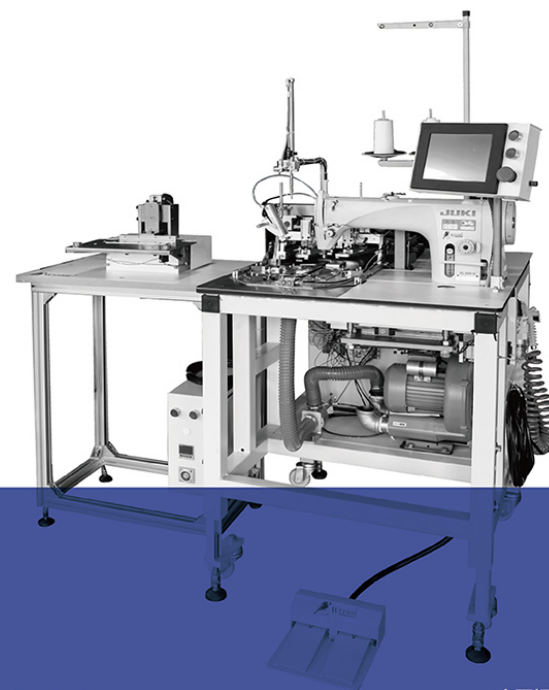


## 技术特点

1. 独立的X、Y轴方向运动控制，可以满足长距离缝制的精度。
2. 快速换模结构，适应袖衩不同形状、规格及左右袖衩更换。
3. 下模板压紧机构，预防插板缩回时带动面料错位，保证了折叠的稳定性。
4. 模具压板缩回机构，可以稳定的缝制袖衩末端各种样式封口。
5. 下顶辅助装置，保证了袖衩折叠的稳定性。
6. 自动断线检测功能，可实时保证缝制效果，并配有紧急停止按钮装置，确保设备安全运行。

## 生产性能

- 1人操作2台 2000-2200件/8小时  
由于缝制条件（形状、长度、宽度、针距）不同，生产效率有所不同。



## Technical feature

- 1.Independent control mechanism for movement in the direction of X.Y to ensure sewing precision in the long distance.
- 2.Fast mould-changing meets the demand of various shapes and sizes of sleeve placket and reversing position of right and left sleeve placket
- 3.The pressing mechanism of lower plate ensures folding stability by preventing fabric dislocation when slat retracts
- 4.Returning mechanism of the pressing plate makes sure smoothly seal of the end of sleeve plackets with various shapes
- 5.Downwards pusing device ensures the stability of sleeve placket folding
- 6.Auto detecting of the threading cutting ensures sewing efficiency and emergency stop device gurantees saftey operation.

## Performance

- 1 person operates 2 sets 4000 pieces/8 hours  
Output varies due to different sewing conditions(shape,length,width and needle pitch)

## 主要规格

最高缝制速度/rpm: 3000  
针距长度/mm: 1-3  
采用机针/mm: DB×11#11-14#  
缝制范围/mm: 30W×190L  
额定电压/V: 220  
功率/KW: 2  
工作气压/ mpa: 0.5  
耗气量L/min: 200L  
外型尺寸/mm:  
1120L×760W×1600H  
设备重量/ kg: 350

## MAIN SPECIFICATION

Max sewing speed/rpm: 3000  
Stitch length/mm:1-3  
Feeding style: interval feeding  
Needle/mm:DB×11#11-14#  
Feeding range//mm: 30W×190L  
Rated voltage/V: 220  
Power/KW: 2  
Operating air pressure/MPa:0.5  
Air consumptionL/min: 200  
Equipment dimension/mm:1120L×760W×1600H  
Equipment weight/ Kg: 350